

RMC-3L-0

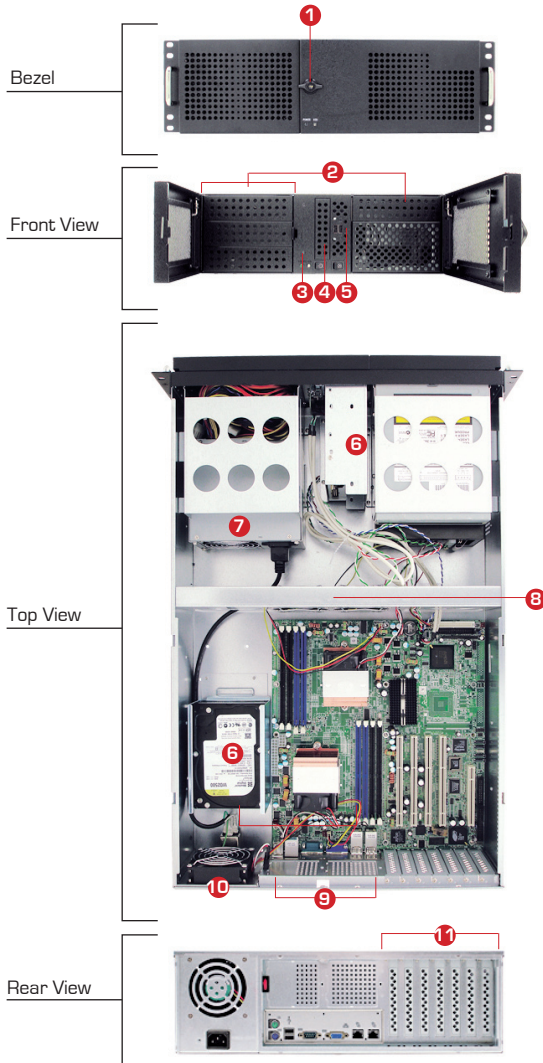
Applications

Internet Server (Web / Mail)

File Server

NAS / iSCSI

CCTV Surveillance DVR



Features & Benefits

- 1 Front bezel with lock for data security and protection
- 2 Four(4) external 5.25-inch bays supported
- 3 Power on/off, system reset and LEDs for HDD & LAN
- 4 One(1) external 3.5-inch bay supported
- 5 Front access dual USB port
- 6 Four(4) internal 3.5-inch HDD supported
- 7 PS/2 size single power supported
- 8 Two(2) middle fans for optimized cooling [Two(2) extra fan slots for upgrade]
- 9 Two(2) rear fan slots for upgrade
- 10 One(1) rear fan for optimized cooling
- 11 Seven(7) PCI slots attribute to network expansion and scalability

| | |
|--|---|
| BTO Built-to-Order (BTO) : Minimum Order Quantity (MOQ) 100 | |
| Model Number : RMC-3L-0 | |
| Order Information : RMC-3L-0 | |
| Industry Standard : EIA-RS310D | |
| Materials : Heavy-duty preplated SPGC cold-rolled steel | |
| Finish: | Outside / Front : Texture coated on front panel |
| Dimensions : (W x D x H) | mm : 482.6 x 670 x 133.35 |
| | inches : 19 x 26 x 5.25 |
| Cooling : | Middle: 2 x 80x25mm fans (+ optional 2 x 80x25mm) |
| | Rear: 1 x 80x25mm fan (+ optional 2 x 60x25mm fan) |
| | ● Descriptions |
| Power Supply : | 30X 300W ATX PFC |
| | 46E 460W EPS-12V PFC |
| Expansion : 7 x PCI slots (full height, full length) | |
| Controls : Power on/off and system reset + 2 x USB ports | |
| Indicators : Power and HDD LEDs | |
| System Board : Up to 12"(W) x 13"(D) E-ATX/SSI EEB 3.6 compliant M/B | |

| | | | |
|---------------------------------------|---------------------|----------------------|---|
| Drive Bay : | External | 5.25" | 4 |
| | | 3.5" | 1 |
| | | 3.5" hot-swap | 0 |
| | Internal | 2.5" hot-swap | 0 |
| | | 3.5" | 4 |
| | Slim CD-Rom/DVD-Rom | | 0 |
| | Slim FDD | | 0 |
| Temperature : 0°C(32°F) ~ 50°C(122°F) | | | |
| Humidity : 5%~95% non-condensing | | | |
| Gross Weight : 18 kgs / 39.6 lbs | | | |
| Packaging Dimension (W x D x H) : | | mm : 580 x 850 x 300 | |
| Cubic Feet : 5.2 | | | |
| Reference Container Loading : | 20' | 200 | |
| | 40' | 400 | |
| | 40' H | 450 | |
| Mounting Options : | BKT-2M-010-04400-G | BKT-2S-010-24200-F | |
| | SLR-26 | | |

Mechanical Drawing

